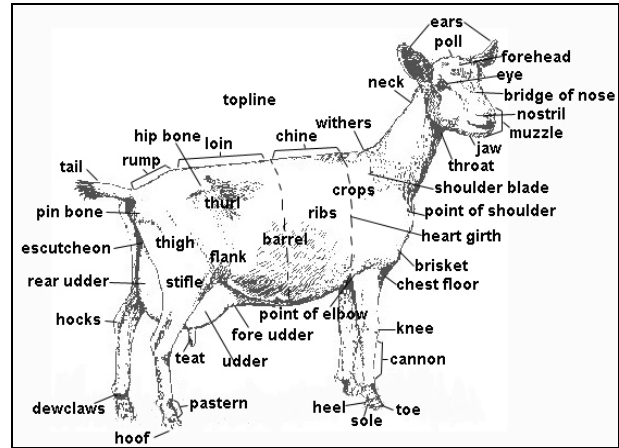


Show Rules adopted by the
MINIATURE GOAT BREEDERS ASSOCIATION OF AUSTRALIA INC.
Published by the Australian Miniature Goat Registry

17: Show Goat Standard of Excellence

17.1. The standard of excellence of the MGBAA Show Goat, is beauty, symmetry and balance, possessing the conformation characteristics desirable of the breeds. Miniature Goats should show refinement and femininity in the Does, and boldness and masculinity in the Bucks, at the same time, displaying an impeccable temperament. The general impression should be one of refinement, symmetry, agility and an alert intelligence. The Miniature Goat is a creature of very high intelligence, curiosity, alertness and friendliness. Since the Breed objective is a small perfectly balanced animal, preference in judging shall be given to the smaller animal for its age and breed type when all other characteristics are equal.



MBGA Official Scorecard (100 points)

Temperament: 15 points

BEHAVIOUR: A good temperament is one of the utmost importance, tractable, alert, curious, intelligent, cooperative and friendly. Animals must be led.

General Appearance, Style & Quality: 15 points

The Australian miniature goat is a genetically small sized, well-muscled, stylish animal with all parts of the body in balanced proportion relative to their size. The animal must exhibit a natural presence, alert attitude combined with balance, style and overall symmetry. Refinement of bone but not lacking in substance, especially in the chest, girth, shoulder and hip.

Fitting & Handling; top presentation of animal & handler. The coat must be well groomed and may be shown, naturally short or clipped, cashmere – soft & silky or sheltie coat - reasonably thick, evenly distributed throughout, length at least to the knees with face and legs free of fleece. Any colour, marking or pattern is acceptable, any skin colour acceptable, any eye-colour is allowed.

Size – Height Measurement is to be taken at the highest point of the wither to the ground with the animal standing squarely on all four feet with all legs in a vertical line to the ground, with the head held in an upright relaxed position. Heights as indicated on show schedule.

Head & Breed Character: 10 points

Head wide, medium in length with bright eyes set well apart. Any eye colour is accepted. Facial profile and ears in accordance with the breed standard, polled or neatly disbudded. A relatively wide muzzle, with even bite (allowance for Nuwby) and broad lips.

The neck should be in proportion to the size of the animal and must blend smoothly into all body junctions, feminine in does and masculine in bucks, showing appropriate muscling.

Forequarters: 10 points

Withers, wedge shaped, set prominently above tightly assembled shoulders. Points of shoulder and elbow should be tight and blend smoothly with body allowing the forelegs to move smoothly against the ribs. Refined bone with sturdy, clean molded joints. The crop should be full and the brisket moderately prominent & low. Chest floor deep and wide.

Body: 15 points

Long, deep, wide body increasing in width from heart girth to rear barrel; level top line and proportionately short, strong, broad back that is level along chine and loin; Full at elbow, Well sprung, open, long flat ribs with increasing width and angling towards the rear of barrel. Refinement of bone but not lacking in substance, especially in the chest, girth, shoulder and hip.

Hindquarters: 15 points

Slightly sloping long, wide rump dropping slightly from hips to pins; wide almost flat between thurls; pins and hip bones set wide apart and well defined. Thighs from rear, clean and wide apart, highly arched, curving outward into the escutcheon to accommodate udder and attachment.

Reproductive system: 10 points

Does: Udder should be deep, wide and capacious in relation to the size of the doe. Udder should be balanced and tightly attached, soft and pliable, blending smoothly as viewed from the side and the rear. Medial suspensory ligament strong, clearly defining udder halves, holding udder snugly against body and well above hocks. From the side, udder ideally positioned one third forward of leg, one third under leg, one third behind leg. Udder pliable and elastic, well collapsed after milking, balanced and free of scar tissue. Teats proportionally shaped and evenly sized, ideally plumb when viewed from side or rear.

Bucks: must have two evenly placed rudimentary teats and a full, well attached, relatively even, appropriately sized scrotum and two evenly sized testicles. Sheath clean.

Feet & Legs: 10 points

Correct from all angles set wide apart, straight, strong and squarely underneath. Medium length, well-angled pasterns front and rear. Cleanly molded hocks, nearly perpendicular from hock to pastern, well defined tendons. Feet short, neatly trimmed, compact, sloping hooves pointing directly ahead, heel as deep as toe.

Faults will be judged on their severity, teeth protruding less than ½cm (5mm) not visible, neck too long or thin, loose shoulders, shallow or narrow chest floor, roach or sway back, slab sided, shallow body, short rump, narrow or steep sloping rump, fleshy pendulous udder, unduly divided udder, pockets in udder, teats too small, too thin, bulbous, double teats, supernumery teats, double orifices, that do not interfere with kids nursing. Bucks with divided scrotum, less than 2½cm. Cow or sickle hock, knock knees, posty leg, dropped pastern, feet pointing in or out, splayed feet, uneven gait, Scurs more than 2½cm but less than 5cm.

Serious Faults (second place only): folded ears (length wise), teeth protruding more than ½cm (5mm), but not visible, double teats or supernumery teats that interfere with kids nursing, ill defined unbalanced udder. Bucks with divided scrotum, more than 2½cm, scrotum small for age of animal. Scurs more than 5cm.

(Note: ladies finger is about 1cm, mans finger is about 1½ -2cm)

Disqualifying Faults (not eligible for showing); Nasty Temperament, overshot or undershot jaw visible, more than 1cm (10mm), obviously crooked face, Hermaphroditism (both male & female), monorchid/cryptorchid (retained testicle/s), serious emaciation, blindness, horns.

18: Showing**18.1. Eligibility for Showing (Breed Classes)**

(a) Animals must hold current AMGR/MGBAA registration certificates, a copy of which is to be submitted with show entry form or presented before show to be eligible to participate in Australian Miniature Goat Breed Classes.

(b) Exhibitors must be a current financial social or full member at close of entries. MGBAA members with any outstanding membership fees on the 1st January with the Miniature Goat Breeders Association of Australia Inc. will not be eligible to compete at any MGBAA shows for that year unless all outstanding fees are paid.

(c) The following height for age restrictions have been set for the purpose of showing;

- Juniors under 12mths up to 53.3cm.
- Bucks 12mths & under 24mths up to 57cm.
- Bucks/Wethers over 24mths not to exceed 60cm.
- Adult does must not exceed 57cm.

All Animals will be measured in prior to the commencement of judging and catalogue signed by show manager.

Animals are to be brought up to the measuring station as directed by the measuring steward.

(d) Any animal deemed to exceed the maximum height for age cannot be shown in classes.

(e) Permanent Identification will need to be easily identified and correspond to what is listed on the Registration Certificate. Animals must have NLIS ear tag in place. Identification must be confirmed prior to commencement of judging.

(f) Age of the animal will be determined from date of birth.

(g) Entire Males must have all the fully developed physical characteristics of a breeding male and must be masculine in appearance.

(h) Animals must be serviceably sound, in good condition and well groomed. Transmissible weakness and unsoundness to be counted against in Breed classes.

(i) A registered animal may be shown under a lessee's ownership provided an official lease is registered with the AMGR/MGBAA. For points to count with respect to any competition, such agreement & fees must be received by the AMGR before the day of such competition. The lessee becomes the legal owner of the animal for the period of the lease & the animal must be entered in ownership of the lessee.

(j) It is a condition of entry that Champion, Reserve Champion, Grand Champion and Supreme exhibits stand to be photographed, prior to the end of the show for recording and promotion of show results. Failure to do so will result in disqualification of exhibit, award/s being permanently removed and forfeiture of entry fees. Photos and results of classes / animals will be published as the Show Society / MGBAA require. All photos TAKEN BY THE MGBA REMAIN the Property of the MGBA AND COPYRIGHT RULES APPLY.

18.2. General

- (a) Entry forms must be filled in completely, signed by exhibitor and be accompanied by the correct fees
- (b) Rules set for each show will be implemented along with the Rules as set herein. [MGBAA Show Rules apply. MGBAA Inc Breed Standards, Heights and Regulations will govern breed related issues IN ALL CASES](#)
- (c) Every exhibitor, handler, and trainer or his agents must provide all information required on the competition entry form, and are responsible for their own errors and those of their agents in the filling out of such forms.
- (d) bucks must be in the control of an adult handler at all times or tethered in trailer or pen.

18.3. Presentation

- (a) Presentation of animals will be at the discretion of the Owner. Animals must be shown to its best possible visual advantage in order to promote the Australian Miniature Goat breed as one of beauty, intelligence and of impeccable temperament.
- (b) Animals may be presented for showing in well groomed short coat, cashmere coat, sheltie coat, neatly trimmed or clipped in accordance with ideal breed type standards. Hooves must be neatly trimmed and well maintained.
- (c) "Cute" presentation is for Fancy Dress and costume classes only. This includes adornment with ribbons and bows.
- (d) Halters or collars may be used provided they are neat and tidy and provide adequate control of the animal for which they are being used.
- (e) Glue / Tape / Surgical procedures to change conformation will warrant instant disqualification from class.

18.4. Exhibitors

- (a) No Exhibitor, animal or equipment may display any form of identification as to the name of the animal while in the show ring. Judges will not acknowledge such exhibits.
- (b) All exhibitors must conduct themselves in an exemplary manner at all times. [Unacceptable conduct or poor sportsmanship will not be tolerated, offenders can be excused from the class and the remainder of show and forfeit any awards received, entry fees, and the right to show in any additional classes at this show and face possible exclusion from future shows, at the discretion of the judge and steward on the day.](#)
- (c) Cruelty, abusiveness or poor showmanship by exhibitors will result in expulsion from further classes.
- (d) Exhibitors must present themselves in smart casual attire and must wear closed in shoes. Costume dress is restricted to Fancy Dress classes. All exhibitors (by their dress and behavior) should be a credit to themselves and to the MGBAA Inc.
- (e) Exhibitors are not permitted to talk to Judge prior to or during judging, unless spoken to by the Judge.

18.5 Animal Welfare

Every animal exhibited at an MGBAA show shall, at all times, be treated humanely and with dignity, respect, and compassion. The standard by which conduct or treatment shall be measured is that a reasonable person, informed and experienced in generally accepted livestock exhibition training procedures or veterinary standards, would determine cruel, abusive, or inhumane. (The Show Manager has the final decision on disqualifying individuals who do not observe these standards).

18.6. Judges

- (a) A Judge must have a thorough knowledge and understanding of the standard of excellence for goats in general.
- (b) A copy of the Show Rules will be sent to Judge/s selected.
- (c) A Judge shall not be a competitor, exhibitor, steward or manager at any show at which they are officiating.
- (d) A Judge shall not adjudicate any class in which a family member or any of their animals or the Judges own animals are competing. The onus is on the competitor to withdraw from the class.
- (e) A Judge shall not discuss the sale, lease or purchase of any animal with an exhibitor at the show, prior to or while officiating there.
- (f) A Judge must not visit animals or owners, nor inspect or discuss any animal entered in the show or contest prior to Judging.
- (g) No Exhibitor shall approach the Judge with regards to a decision unless they obtain permission from the Steward, who may arrange a meeting with the Judge. The Steward shall remain present during the meeting.
- (h) Once a class has been judged it shall not be re-judged
- (i) Where events not listed in the RULE BOOK are encountered, they will be judged according to the local rules as laid down on the day by the Show Committee or RASQ. Judges have the authority to make decisions on any point not covered in the rules applying to class procedure, scoring, and conduct affecting a class under their jurisdiction. provided it is in accordance with MGBAA rules and regulations.
- (j) THE JUDGES DECISION WILL BE FINAL. A Judge's decision, representing his or her individual preference is not protestable unless it is alleged to be in violation of the rules or against the breed standards.
- (k) A Judge may order any person or animal from the competition if they are deemed to be dangerous to fellow exhibitors, if they are visibly sick or obviously injured.
- (l) Animals with disqualifying faults will be quietly "passed over" and not placed.
- (m) **Judges Training**

- Cadets shall be subject to the same rules as for Judges excluding rule 18.6 (c).
- Cadets may have their animals exhibited on the day provided they are prepared and exhibited by other people.
- One cadet per show, minimum 20 classes to be judged to count as one show.
- Cadets are required to judge their own animals at least once.
- Cadet must be a financial MGBAA member. Cadets with any outstanding membership fees on the 1st January with the Miniature Goat Breeders Association of Australia Inc. will not have shows/classes that they cadet at counted towards level two for that year unless all outstanding fees are paid.
- Judges training rules (on back of certificate, *under review*).

18.7. Steward

- (a) The steward may be any capable person, that understands the show rules and is confident working with and directing people.
- (b) Steward/s, time keepers, point scorers and other helpers appointed on the day may have their animals exhibited.
- (c) A good steward makes the work of the Judge much easier by relieving the Judge of details. The Steward informs the Judge of numbers in the incoming class, assembles the class promptly and eliminates long delays. The Steward has the responsibility of checking entries for eligibility, proper attire, equipment and appointments.
- (d) The Steward is in charge of the activity in the ring. They should act as a mediator between Judge and the exhibitors. The Judge should request the Steward to move animals as advised including the removal of animals for safety reasons. The Steward is responsible for preventing exhibitors crowding the ring and should endeavour at all times to keep the possibility of accidents to a minimum.
- (e) The Steward should collect show cards (if any) after the class and present them to the Judge for him/her to sign.
- (f) The Show Manager shall have the authority to enforce all rules referring to the show. They may excuse any animal or exhibit from the ring prior to or during the judging, for cruelty or abuse or unsportsmanlike behaviour.
- (g) The show management has the right to have any person removed from the show grounds, found to be acting in a cruel, abusive or inhumane manner. All entries connected with such, directly or indirectly shall be forfeited and the matter will be reported to the appropriate authorities. The standard by which such conduct or treatment will be measured is that which a reasonable person, informed and experienced in generally accepted animal training and exhibition procedures, would determine to be cruel, abusive or inhumane. Further action may be taken by the MGBAA Inc. for breach of Members Conduct rules.
- (h) The Show Manager is responsible for producing photographs of the Champions and Supreme Animals with show results. (Rule 18.11 (j))

18.8 Agriculture and Local Shows Hosting MGBA Classes

Upon successful application to host an MGBAA show, either by the MGBAA to the Show Society or by the Show Society to the MGBAA, the MGBAA will furnish the hosting show with MGBAA show rules, Breed standards, height requirements and a recommended class program.

The Hosting Show Society has its own management and is run to suit the locality in which it is held. The Show rules and regulations listed in the show schedule for each show will apply to all MGBAA shows.

For Championship points to be accepted by the MGBAA, MGBAA Rules and Regulations must apply.

18.9. Ring Procedure

- (a) To be eligible to compete Exhibitors must follow the directions of the Judge and Steward while in or around the ring and be ready to enter their class on time.
- (b) Exhibitors must communicate to the Judge through the steward.
- (c) Animals to be shown In-Hand at a walk. To be judged 70% on breed type, conformation, quality and substance; 30% on manner of walking, disposition and general manners.
- (d) All animals must be in the control of a competent handler at all times. Animals should behave quietly and show good manners in and out of the show ring. Unruly animals will be excused from the ring.
- (e) Entire Males of breeding age must be under the control of an adult handler [18yrs+] this rule applies to ALL SECTIONS, NO EXCEPTIONS. It is the buck owner's responsibility to ensure that all possible safety precautions are taken.
- (f) No exhibitor may withdraw or remove an animal from a Class after it has commenced, or remove them from the show ring, before the class is over and the judges comments have concluded and without the permission of the Steward.
- (g) If an exhibitor voluntarily removes an animal from the ring without the permission of the Steward, the exhibitor will be disqualified and all their entries from all future classes at that show and all prizes and entry fees for the entire show will be forfeited.
- (h) In the case of accidents, the above rule will not apply.
- (i) Animals are NOT to be left unattended at the ring side.
- (j) Animals, exhibitors and handlers are to conduct themselves in an exemplary manor at all times. Unruly animals, cruel, abusive, or disruptive exhibitors/handlers will be excused from the ring and will be prevented from competing in further classes. All entry fees and other such costs will be forfeited and offenders may be banned from future

shows. All problems/disputes must be quietly discussed with Steward without disrupting the Judge or the class(es). The Steward may stop a class if the Steward feels it is necessary and if the problem relates directly to the class in progress and the Steward thinks they can rectify it without disrupting the class. The Steward may call any person(s) to assist with resolving the problem including the Judge and the decision made by the Steward at that time, will be final. Ribbons/awards once placed will not be removed to re-judge class(es). All disputes/problems must be documented. Un-resolved disputes are to be submitted in writing, signed and posted to the MGBAA Secretary within 7 days of the show.

18.10 Events General

- (a) Ring work outs, Show programmes, Classes (refer to rule 18.11 i), etc will be set and implemented as required for each individual show.
- (b) All animals will be judged according to the MGBAA scorecard and faulting sheet.
- (c) Junior Classes (under 3yrs) will be shown collectively as miniature bred.
- (d) Classes will be divided by sex into three groups (male female and desexed) all sexes to be judged equally.
- (e) The Judge has the authority to require the removal or alteration of any halter/ collar/ lead which is believed to be unsafe or inhumane.
- (f) Ribbons to 3rd place will be awarded unless otherwise stated.

(g) Classes;

- 1. Best Presented (optional) (Rule 18.13(e)).
 - 2. Classic Elf Ear (optional)
 - 3. Classic Pixie Ear (optional)
 - 4. Classic Munchkin Ear (optional)
 - 5. Classic Nwby Ear (optional)
 - 6. Junior Handler/s (optional) *may be broken into two or three age groups.*
 - 7. Doe Kid under 6mths (optional)
 - 8. Doe Kid 6mths & under 12mths** (if no Class 7, then Class 8.: Under 12mths)
 - (A).** Champion & Reserve Miniature-bred Doe Kid (optional)
 - 9. Doe Junior 12mths & under 2yrs**
 - 10. Doe Junior 2yrs & under 3yrs**
 - (B) Champion & Reserve Miniature-bred Junior Doe:** (class 7, 8, 9 & 10 if no (A).)
 - 11. Buck Kid under 6mths, (optional)
 - 12. Buck Kid 6mths & under 12mths** (if no Class 11, then Class 12.: Under 12mths)
 - (C).** Champion & Reserve Miniature-bred Buck Kid (optional)
 - 13. Buck Junior 12mths & under 2yrs**
 - 14. Buck Junior 2yrs & under 3yrs**
 - (D) Champion & Reserve Miniature-bred Junior Buck:** (class 11, 12, 13 & 14 if no (C).)
 - 15. Adult Doe 3yrs & under 5yrs**
 - 16. Adult Doe 5yrs & over**
 - (E).** Champion & Reserve Miniature Doe
 - 17. Adult Buck 3yrs & under 5yrs**
 - 18. Adult Buck 5yrs & over**
 - (F).** Champion & Reserve Miniature Buck
 - (G).** Supreme Miniature Goat: (E & F only)
 - 19: wether under 6 months (optional)
 - 20: wether 6 months and under 12 months** (if no class 19 then class 20, under 12 months)
 - (H) Champion and reserve champion miniature bred wether kid (optional)
 - 21: wether junior 12 months & under 2 years** (if no class 20 then class 21 : wether 12 months and under 2 years)
 - 22: wether Junior 2 years and under 3 years** (if no class 21 then class 22 : wether 2 years and under 3)
 - (I)champion and reserve champion Junior wether** (Class 19,20,21,22 if no (H)
 - 23 wethers over 3 years (optional)
 - (K)Champion and reserve champion adult wether**
 - 24. Two Progeny of the same Sire OR Dam. Rule 18.13(a).
 - 25. Sire OR Dam and one Progeny. Rule 18.13(C).
 - 26. Breeders Group. Rule 18.13(b).
 - Most Successful Exhibitor
 - Most Successful Breeder
- (i) Classes 8, 9, 10, **(B)**, 12, 13, 14, **(D)**, 15, 16, **(E)**, 17, 18, **(F)** & **(G)** 20, 21, 22, **(I)** & **(K)**, are mandatory classes to be held, for show to be counted as a Champion Point Show. (see Rule 19)
- (j) For any show to be a Champion points show, photos of all Champions and the Supreme Animal must be submitted with show results.

18.11 Awards

(a) **Champion Award.** On completion of judging of all age group classes in the section, (eg- kid doe section, kid buck section, junior doe section, junior buck section, adult doe section, adult buck section, wether section) first place winners from each section will return to the ring. The Judge will select the champion animal from the line of first place winners.

(b) **Reserve Champion Award.** The steward will then call the second place animal in the class from which the Champion had been selected & place it in the line up with the remaining first place winner/s, to be judged equally for the title of Reserve Champion.

(c) **Supreme Exhibit.** On completion of judging the Adult Champion classes all Adult Champion exhibits, except Champion Challenge Adult will compete for Supreme Champion. Supreme Champion will only be awarded to exhibits, 3yrs & over.

18.12 Other Classes

1st, 2nd, & 3rd Place ribbons only.

(a) **Progeny** classes shall have at least two (sibling) entries entered under the name of the sire or dam, one handler per entry. They shall be judged with emphasis placed upon quality, conformation, and uniformity of breed characteristics. More than one set of entries per sire or dam may be entered in the same class. Entries must be from the same exhibitor.

(b) **Breeders Group**, two or three animals bred by the same breeder (same stud name), from the same owner. They shall be judged with emphasis placed upon likeness, quality, conformation, and uniformity of breed characteristics. More than one set of entries per sire or dam may be entered in the same class. Entries must be from the same exhibitor.

(c) **Sire OR Dam and one progeny**, To be judged on quality, conformation and uniformity of type . Progeny must be better than sire/dam. Entries must be from the same exhibitor.

(d) **Best Presented** judged on cleanliness of exhibit, clean ears, nostrils, eyes, under tail, feet, teeth, coat, coat well groomed, no loose hair, matching collar & lead, feet trimmed evenly, etc.

(e) **Champion Challenge**, for Australian Champion animals. Judged on conformation, temperament, size, breed characteristics.

(f) Any "Other" classes may be offered by the MGBAA.

18.13 Showmanship

The purpose of showmanship is to develop leadership, initiative, and responsibility. To develop self-confidence and patience. To learn show procedures, rules, and etiquette as a handler and develop high standards of sportsmanship when dealing with judges, competitors, and the public. Showmanship is about the positive experience of goat ownership and of presenting the animal in the show ring and learning how to win and how to lose gracefully.

Showmanship is concerned with how well the animal is shown by the handler. The emphasis is on the handler's presentation of the animal standing still and in motion. The handler must convey knowledge and understanding of the goat's breed. The handler should present the goat according to the breed standard. The handler and goat must appear to be part of a team. They must work well together, move fluidly, and give an overall picture of being one unit.

Showmanship is designed to judge the *exhibitor's* ability.

(a) **Appearance of the goat** 30 points

- Clipping
- Grooming
- Tack

(b) **Appearance of exhibitor** 10 points

• A "professional" look is always the best. All clothing, including hat and boots, should be clean and well-fitted. Also, shirts and pants should be neatly pressed.

(c) **Knowledge** 10 points

• A judge may ask the exhibitor a question regarding the animals age, breed type, breeding history etc. Answer any questions in clear and complete sentences.

• Be honest! If you don't know the answer, say so!

(d) **Handling Ability** 50 points

• Confidence is a must. The more confidence you show, the more the judge will remember you.

• Show naturally with a pleasant smile. Be confident and enjoy the class as you are presenting the work you have previously accomplished. HAVE FUN!

• Never let the judge out of your sight. Keep your eyes on the judge.

• Be aware of where he/she is and where you need to be.

• Make sure you and your goat are always straight.

• When lining up, stay a goat length away from the person beside you. Line up with the first goat, not the person next to you; they may be wrong.

• Listen to the judge's reasons for the placing's and learn from those reasons.

• Leave the ring with pride and confidence.

• If you tried, and did your very best, you are a winner!

Recommended Classes

Pee Wee Showmanship Class up to 6yrs old.

The intention of the pee wee class is to be fun and to encourage children to participate as an exhibitor in the future.

Junior 7yrs- 10yrs

Intermediate 11yrs- 14yrs

Senior 15yrs- 18yrs

Open over 18yrs

18.14 Trail

18.15. Show Jumping

18.16. Show Protests and Penalties

(a) All protests (at shows) must be submitted in writing, signed and handed to the show Organiser within 1 hour of the alleged problem and prior to the close of the show. ~~along with a \$50 bond, which will be refunded or retained, in accordance with the out come and at the Organiser's discretion.~~

(b) A "Protest Panel" shall consist of the show Organiser plus two others and may or may not include the Judge of the class where the protest was made.

(c) The MGBAA recognises the position, rulings and directives of the Royal Agricultural Society in all matters relating to Society Shows and will follow their guidelines in situations where no rule has been provided for in these rules.

(d) All parties involved will be given fair hearing. The Protest Panel's decision is final.

(e) A copy of any objection, complaint or protest shall be lodged with the MGBAA within seven days such occurring.

(f) The penalty for infringement of Rules may be elimination of the exhibitor from the event at the discretion of the Show Officials.

(g) In the case of disqualification, no points will be scored.

(h) All entry fees will be forfeited.

19: Permanent Awards

19.1. Australian Champion Award

(a) Only AMGR/MGBAA Registered animals, 3yrs and over may apply for Australian Champion status. Wins obtained prior to registration with AMGR/MGBAA will not be counted.

(b) An animal must accrue a minimum of 100 points. A total of 20 points may be gained at any one show and the 100 points must be gained under at least 3 different Judges

(c) Animals reaching AUSTRALIAN CHAMPION STATUS will be awarded the title of "Champion" and will have the letters A.CH permanently added to their name. The Championship title is a life time award and will not be removed from an animal unless in compliance with the rules and regulations herein.

(d) Show points will only be considered when obtained in breed Classes, a maximum of 50 points from Junior Classes (under 3 yrs) may be accrued, the balance being obtained as an adult.

(e) It is the responsibility of the Owner to maintain records of wins gained at each show and supply accurate documentation for the registering of such. There is no time limit for acquiring wins and they are transferred with animal upon sale.

(f) Points can only be accumulated at approved shows using approved Judges. Royal shows with **90** or more entries in the ring will be counted as double point shows. States that have no Royal shows available may organise and in house show, or appoint one State show at the beginning of the year as a Branch show and obtain double points. Show must have more than 90 entries in the ring to qualify.

Championship points can be collected at any age

Champion Miniature-bred Doe kid: 5 points plus 1pt for your animal and then 1 point for every doe under 12 months old

Champion Miniature-bred Buck kid: 5 points plus 1pt for your animal and then 1 point for every buck under 12 month old

Champion Miniature-bred Wether kid: 5 points plus 1pt for your animal and then 1 point for every wether under 12 month old

Champion Miniature-bred Doe: 5 points plus 1pt for your animal and then 1 point for every doe 12 months to 36 months

Champion Mini bred buck: 5 points plus 1pt for your animal and then 1 point for every buck 12 months to 36 months

Champion Mini bred wether: 5 points plus 1pt for your animal and then 1 point for every wether 12 months to 36 months

Champion Doe: 5 points plus 1pt for your animal and then 1 point for every doe over 3yrs of age

Champion Buck: 5 points plus 1pt for your animal and then 1 point for every buck over 3yrs of age

Champion Wether: 5 points plus 1pt for your animal and then 1 point for every wether over 3yrs of age

Supreme Champion: 5 points plus, 1pt for your animal and then 1 point for every opposite of sex at show (adults only).

Champion Challenge: 5 points plus, 1 point for your animal and for every other animal in the class.

Maximum of 20 points can be accumulated at one show.

Animals may also obtain up to a total of 20 points from progeny throughout the goats show career.

3 points for the sire and dam of progeny that are awarded Champion (of sex),
5 points for the sire and dam of progeny that are awarded Supreme (of all breeds)
10 points for the sire and dam of progeny that are titles Australian Champion.

(g) Animals that have earned their Permanent Champion status may only be shown in the Champion Challenge classes, in breeders groups, best presented, ear type, trail, jumping and novelty classes at future shows.

19.2. Australian Grand Champion Award

(a) Grand Champion is awarded to an animal that has accrued at least 300 points competing in the Champion Challenge.

5 points awarded for 1st place, plus one point for itself and each additional animal in the class with a maximum of 10 points obtainable at any one show.

(b) AUSTRALIAN GRAND CHAMPION STATUS will be awarded and the letter G will be permanently added to the A.CH before the animal's name.

(c) Animals must be height verified at time of applying for Grand Champion Status. Overheight (over 25") animals are not eligible.

(d) All Permanent Australian Grand Champions are only eligible to be shown in best presented, ear type, breeders groups, trail, jumping and novelty classes.

20: Fun Days & Animal Clinics

20.1. General

(a) Animals do not have to be Registered to participate.

(b) Animals do not have to be in show condition to participate.

(c) Animals MUST be in the control of a competent handler at these events.

(d) Anyone may attend.

(e) Suitable "fun day" and "animal clinic" attire is recommended.

(f) Closed in footwear is required.

(g) Animals must be kept in their trailer or other suitable penning facility when not actively participating.

(h) Any age may participate unless otherwise specified.

(i) Bucks may only attend specified days.

(j) Horned animals will be excluded.

21: Waiver & Indemnity

As an express condition of participation at an AMGR or MGBAA event, each participant their families and associates, agrees that the AMGR or MGBAA and it's representatives, shall not be held liable for any damage or loss, injury or death of any participant, animal, or for damage done to the facility or property and each participant voluntarily participates at their own risk and assumes sole responsibility for their own actions and any damage or loss, injury or death that may arise from such participation.

(Rules current from 17th July 2008)

Published by

The Australian Miniature Goat Registry

First Published (Handout) April 2000

Re-printed (with modifications) February 2002

Re-printed (with modifications) January 2006

Re-printed (with modifications) January 2008

Re-printed (with modifications) March 2010

Reprinted (with modifications)June 2010 in blue

© Information, Design, Illustrations, Photographs, S. Ludwig 2000-2008

All Rights Reserved.

Information contained herein is based on technical detail and management practices used by established Australian Miniature Goat Breeders and overseas goat organizations recognised by the Australian Miniature Goat Registry and MGBAA.